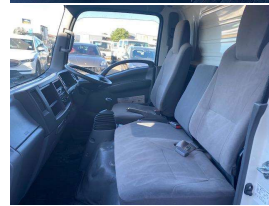
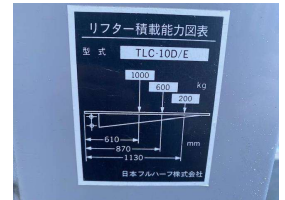


2013 Isuzu Elf Taillift



VEHICLE INFORMATION

Cash Price

Includes GST,
Registration &
Licensing

\$39,990

Finance may be
available on this
vehicle.
Ask one of our
friendly staff for
more information.



Gain peace of mind
with Mechanical
Breakdown Insurance.
Ask us how.

Body
Truck - Box Body

Odometer
121,000 km

Engine
3000 cc

Fuel Type
Diesel

Transmission
6 Speed Manual

Wheels
-

VIN
NMR85-7020320 - 13

Reg No.
-

Ext Colour
White

History
-

Seats
-

Interior
-

Audio
-

Stock ID
25010

STOCK NO 25010

MODEL - NMR85 - NARROW CAB
ENGINE - 4JJ1 - 3.0 DIESEL TURBO
TRANSMISSION - 6 SPEED MANUAL
LICENSE - CAR
DRIVERS AIRBAG AND ABS
TAILLIFT - 1000kg - dimensions 1800 x 1470

INNER BOX DIMENSIONS 4560 X 1800 X 1800H 14.7m3

WEIGHTS - TARE 3470KG - GVM 5635KG - PAYLOAD 2165KG
GMCW 7500KG
BRAKED TOW RATING 3000KG - UNBRAKED 900KG

##PLEASE CONTACT US PRIOR TO VIEWING AS SOME OF OUR
VEHICLES ARE IN STORAGE YARDS AND NOT LOCATED ON SITE -
THANKYOU FOR YOUR COOPERATION ##

A brief description on what we can offer at Counties Commercial
Centre

Mechanical workshop for repairs and maintenance
Engineering and fabrication, work carried out to LT400 certification
Towbars - Load anchorages - Taillifts - truck modifications
Panel shop with a state of the art Truck paint booth

Competitive Finance through UDC



Counties Commercial Centre, Phone 09 2393340, Email vince@countiescommercial.co.nz
91 Adams Drive, Pukekohe, Auckland 2120, New Zealand