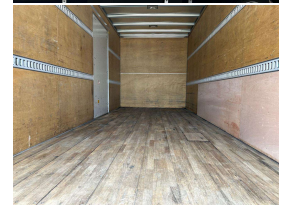


# 2014 Isuzu Forward Box Body 31m3



## VEHICLE INFORMATION

### Cash Price

Includes GST,  
Registration &  
Licensing

**\$62,990**

Finance may be  
available on this  
vehicle.  
Ask one of our  
friendly staff for  
more information.



Gain peace of mind  
with Mechanical  
Breakdown Insurance.  
Ask us how.

Body  
Truck - Box Body

Odometer  
86,000 km

Engine  
5190 cc

Fuel Type  
Diesel

Transmission  
MT6

Wheels  
-

VIN  
-

Reg No.  
-

Ext Colour  
White

History  
-

Seats  
-

Interior  
-

Audio  
-

Stock ID  
25018

STOCK NO 25018

MODEL - FRR90

ENGINE - 4HK1 - 5.2 DIESEL TURBO

TRANSMISSION - 6 SPEED MANUAL

LICENSE - CLASS 2

DRIVERS AIRBAG AND ABS

2 X REAR BARN DOORS AND 1 X SIDE SLIDER

## INNER BOX DIMENSIONS 6220 x 2200 x 2275 ## 31m3

WEIGHTS - TARE 4400KG - GVM 7960KG - PAYLOAD 3560KG

GMCW 9500KG

BRAKED TOW RATING 4000KG - UNBRAKED 1000KG

##PLEASE CONTACT US PRIOR TO VIEWING AS SOME OF OUR  
VEHICLES ARE IN STORAGE YARDS AND NOT LOCATED ON SITE -  
THANKYOU FOR YOUR COOPERATION ##

A brief description on what we can offer at Counties Commercial  
Centre

Mechanical workshop for repairs and maintenance  
Engineering and fabrication, work carried out to LT400 certification  
Towbars - Load anchorages - Taillifts - truck modifications  
Panel shop with a state of the art Truck paint booth

Competitive Finance through UDC



Counties Commercial Centre, Phone 09 2393340, Email vince@countiescommercial.co.nz  
91 Adams Drive, Pukekohe, Auckland 2120, New Zealand