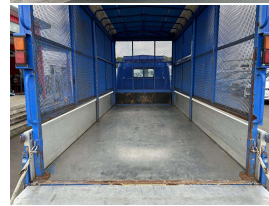


2011 Mitsubishi Canter



VEHICLE INFORMATION

Cash Price

Includes GST,
Registration &
Licensing

\$28,990

Finance may be available on this vehicle.
Ask one of our friendly staff for more information.



Gain peace of mind with Mechanical Breakdown Insurance. Ask us how.

Body
Truck - Flat Deck

Odometer
113,000 km

Engine
3000 cc

Fuel Type
Diesel

Transmission
MT5

Wheels
-

VIN
FEA20-500273 - 44

Reg No.
-

Ext Colour
Blue

History
-

Seats
-

Interior
-

Audio
-

Stock ID
24607

STOCK NO 24607

MODEL - FEA20
ENGINE - 4P10 - 3.0 DIESEL TURBO
TRANS - 5 SPEED MANUAL
LICENSE - CAR
DRIVERS AIRBAG AND ABS
RADIO
DROPSIDE FLATDECK
INNER DECK DIMENSIONS 4350 X 1785 X 2065H ##
WEIGHTS - TARE 3000KG - GVM 4960KG - PAYLOAD 1960KG
PRICE \$28990 incl gst

##PLEASE CONTACT US PRIOR TO VIEWING AS SOME OF OUR VEHICLES ARE IN STORAGE YARDS AND NOT LOCATED ON SITE - THANKYOU FOR YOUR COOPERATION ##

A brief description on what we can offer at Counties Commercial Centre

Mechanical workshop for repairs and maintenance
Engineering and fabrication, work carried out to LT400 certification
Towbars - Load anchorages - Taillifts - truck modifications
Panel shop with a state of the art Truck paint booth

Competitive Finance through UDC



Counties Commercial Centre, Phone 09 2393340, Email vince@countiescommercial.co.nz
91 Adams Drive, Pukekohe, Auckland 2120, New Zealand