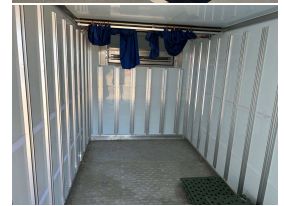


# 2018 Isuzu Elf Freezer



## VEHICLE INFORMATION

### Cash Price

Includes GST,  
Registration &  
Licensing

# \$47,990

Finance may be available on this vehicle.  
Ask one of our friendly staff for more information.



Gain peace of mind with Mechanical Breakdown Insurance. Ask us how.

Body  
Truck - Refrigerated

Odometer  
185,065 km

Engine  
3000 cc

Fuel Type  
Diesel

Transmission  
FAT

Wheels  
-

VIN  
-

Reg No.  
-

Ext Colour  
White

History  
-

Seats  
-

Interior  
-

Audio  
-

Stock ID  
25022

STOCK NO 25022

MODEL - NPR85 - wide cab  
ENGINE - 4JJ1 - 3.0 DIESEL TURBO  
AUTOMATIC  
DRIVERS AIRBAG AND ABS  
REVERSE CAMERA  
FREEZER - NEGATIVE 18 DEGREES  
3 X REAR BARN DOORS  
WHEELBASE - 3400

VERY CLEAN TRUCK

## INNER BOX DIMENSIONS 4575 X 1905 X 2015H - 17.5m3

WEIGHTS - TARE 3690KG - GVM 6805KG - PAYLOAD 3115Kg

##PLEASE CONTACT US PRIOR TO VIEWING AS SOME OF OUR VEHICLES ARE IN STORAGE YARDS AND NOT LOCATED ON SITE - THANKYOU FOR YOUR COOPERATION ##

A brief description on what we can offer at Counties Commercial Centre

Mechanical workshop for repairs and maintenance  
Engineering and fabrication, work carried out to LT400 certification  
Towbars - Load anchorages - Taillifts - truck modifications  
Panel shop with a state of the art Truck paint booth



Counties Commercial Centre, Phone 09 2393340, Email vince@countiescommercial.co.nz  
91 Adams Drive, Pukekohe, Auckland 2120, New Zealand