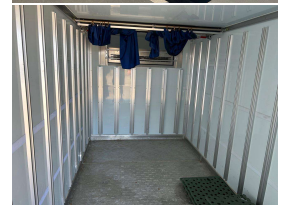


2018 Isuzu Elf Freezer



VEHICLE INFORMATION

Cash Price

Includes GST,
Registration &
Licensing

\$39,990

Finance may be
available on this
vehicle.
Ask one of our
friendly staff for
more information.



Gain peace of mind
with Mechanical
Breakdown Insurance.
Ask us how.

Body
Truck - Refrigerated

Odometer
185,065 km

Engine
3000 cc

Fuel Type
Diesel

Transmission
FAT

Wheels
-

VIN
-

Reg No.
-

Ext Colour
White

History
-

Seats
-

Interior
-

Audio
-

Stock ID
25078

STOCK NO 25078

MODEL - NPR85 - wide cab
ENGINE - 4JJ1 - 3.0 DIESEL TURBO
AUTOMATIC
DRIVERS AIRBAG AND ABS
REVERSE CAMERA
FREEZER - NEGATIVE 18 DEGREES
3 X REAR BARN DOORS
WHEELBASE - 3400

VERY CLEAN TRUCK

PRICE - \$39990 incl GST

INNER BOX DIMENSIONS 4575 X 1905 X 2015H - 17.5m3

WEIGHTS - TARE 3690KG - GVM 6805KG - PAYLOAD 3115Kg

##PLEASE CONTACT US PRIOR TO VIEWING AS SOME OF OUR
VEHICLES ARE IN STORAGE YARDS AND NOT LOCATED ON SITE -
THANKYOU FOR YOUR COOPERATION ##

A brief description on what we can offer at Counties Commercial
Centre

Mechanical workshop for repairs and maintenance
Engineering and fabrication, work carried out to LT400 certification
Towbars - Load anchorages - Taillifts - truck modifications



Counties Commercial Centre, Phone 09 2393340, Email vince@countiescommercial.co.nz
91 Adams Drive, Pukekohe, Auckland 2120, New Zealand