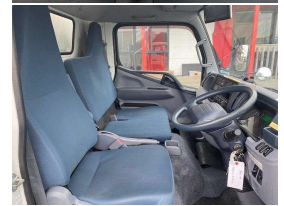


# 2015 Mitsubishi Canter Chiller



## VEHICLE INFORMATION

### Cash Price

Includes GST,  
Registration &  
Licensing

**\$43,990**

Finance may be  
available on this  
vehicle.  
Ask one of our  
friendly staff for  
more information.



Gain peace of mind  
with Mechanical  
Breakdown Insurance.  
Ask us how.

Body  
Truck - Refrigerated

Odometer  
57,349 km

Engine  
3000 cc

Fuel Type  
Diesel

Transmission  
FAT

Wheels  
-

VIN  
FEA50-542421 - 25

Reg No.  
-

Ext Colour  
White

History  
-

Seats  
-

Interior  
-

Audio  
-

Stock ID  
25023

STOCK NO 25023

MODEL - FEA50  
ENGINE - 4P10 - 3.0 DIESEL TURBO  
TRANSMISSION - AUTOMATIC  
DRIVERS AIRBAG AND ABS  
RADIO  
REVERSE CAMERA  
POWER TAILGATE 600KG - Taillift can be removed free of charge  
NEGATIVE 5 DEGREES

INTERNAL BOX DIMENSIONS 3160 X 1765 X 1815H - 10.2m3

WEIGHTS - TARE 3160kg - GVM 5325kg - PAYLOAD 2165kg

##PLEASE CONTACT US PRIOR TO VIEWING AS SOME OF OUR  
VEHICLES ARE IN STORAGE YARDS AND NOT LOCATED ON SITE -  
THANKYOU FOR YOUR COOPERATION ##

A brief description on what we can offer at Counties Commercial  
Centre

Mechanical workshop for repairs and maintenance  
Engineering and fabrication, work carried out to LT400 certification  
Towbars - Load anchorages - Taillifts - truck modifications  
Panel shop with a state of the art Truck paint booth

Competitive Finance through UDC



Counties Commercial Centre, Phone 09 2393340, Email vince@countiescommercial.co.nz  
91 Adams Drive, Pukekohe, Auckland 2120, New Zealand